



DS 6,0xL

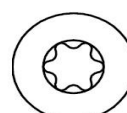
DISTANCE SCREWS

FOR ADJUSTING / SPACING

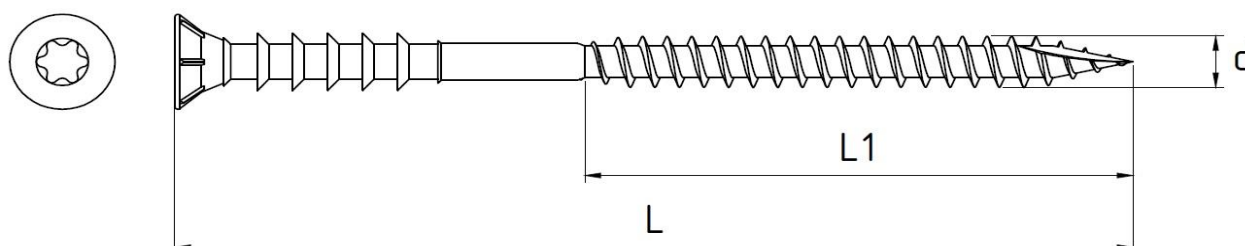
PRODUCT CHARACTERISTICS

SCOPE OF USE : screws for adjusting distance between wooden elements, incl. leveling roof battens, adjusting wall structures, leveling floors, adjusting wooden structures for cladding

MATERIAL : galvanized carbon steel



TX30



AVAILABLE SIZES

product code	d [mm]	L [mm]	L1 [mm]	package box [pcs]
DS68080	6,0	80	45	100
DS680100	6,0	100	60	100
DS680120	6,0	120	70	100
DS680145	6,0	145	70	100